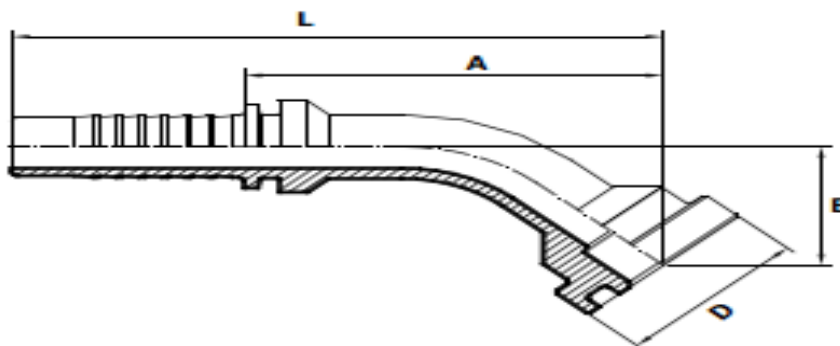
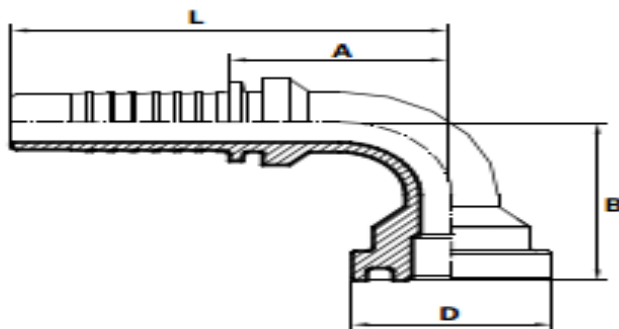


SFL 3000 PSI								
Наименование	РАЗМЕР НА МАРКУЧА		РЕЗБА	РАЗМЕРИ			НАЛЯГАНЕ	
	Диам.	inch	F	D	A	L	bar	PSI
SFL 12 1/2"	12	1/2"	1/2"	30	49	82	350	5000
SFL 12 5/8"	12	1/2"	5/8"	38	52	84	350	5000
SFL 12 3/4"	12	1/2"	3/4"	38	52	84	350	5000
SFL 16 1/2"	16	5/8"	1/2"	30	49	85	350	5000
SFL 16 5/8"	16	5/8"	5/8"	38	48	84	350	5000
SFL 16 3/4"	16	5/8"	3/4"	38	48	84	350	5000
SFL 20 1/2"	20	3/4"	1/2"	30	47	88	350	5000
SFL 20 3/4"	20	3/4"	3/4"	38	47	88	350	5000
SFL 20 1"	20	3/4"	1"	45	50	91	350	5000
SFL 25 3/4"	25	1"	3/4"	38	50	91	280	4000
SFL 25 1"	25	1"	1"	45	50	105	280	4000
SFL 25 1 1/4"	25	1"	1 1/4"	50.8	67	120	280	4000
SFL 32 1"	32	1 1/4"	1"	45	57	117	210	3000
SFL 32 1 1/4"	32	1 1/4"	1 1/4"	51	65	125	210	3000
SFL 32 1 1/2"	32	1 1/4"	1 1/2"	60.3	70	130	210	3000
SFL 40 1 1/2"	40	1 1/2"	1 1/2"	60.3	70	141	185	2700
SFL 40 2"	40	1 1/2"	2"	71	72	143	185	2700
SFL 50 2"	50	2"	2"	71	73	153	170	2465



SFL 45C 3000 PSI									
Наименование	РАЗМЕР НА МАРКУЧА		РЕЗБА	РАЗМЕРИ				НАЛЯГАНЕ	
	Диам.	inch	F	D	B	A	L	bar	PSI
SFL 45C 12 1/2"	12	1/2"	1/2"	30.2	23	63	96	350	5000
SFL 45C 12 5/8"	12	1/2"	5/8"	38.1	28	68	101	350	5000
SFL 45C 12 3/4"	12	1/2"	3/4"	38.1	28	68	101	350	5000
SFL 45C 16 1/2"	16	5/8"	1/2"	30.2	26	59	95	350	5000
SFL 45C 16 5/8"	16	5/8"	5/8"	38.1	30	63	99	350	5000
SFL 45C 16 3/4"	16	5/8"	3/4"	38.1	30	63	99	350	5000
SFL 45C 20 1/2"	20	3/4"	1/2"	30.2	28	63	104	350	5000
SFL 45C 20 3/4"	20	3/4"	3/4"	38.1	32	67	108	350	5000
SFL 45C 20 1"	20	3/4"	1"	44.5	35	70	111	350	5000
SFL 45C 25 3/4"	25	1"	3/4"	38.1	35	83	138	280	4000
SFL 45C 25 1"	25	1"	1"	44.5	32	86	141	280	4000
SFL 45C 25 1 1/4"	25	1"	1 1/4"	50.8	36.0	90	145	280	4000
SFL 45C 32 1"	32	1 1/4"	1"	44.5	36	96	157	210	3000
SFL 45C 32 1 1/4"	32	1 1/4"	1 1/4"	50.8	43	100	161	210	3000
SFL 45C 32 1 1/2"	32	1 1/4"	1 1/2"	60.3	44.0	101	162	210	3000
SFL 45C 40 1 1/2"	40	1 1/2"	1 1/2"	60.3	41.0	112	183	185	2700
SFL 45C 40 2"	40	1 1/2"	2"	60.3	52	123	194	185	2700
SFL 45C 50 2"	50	2"	2"	71.4	59	148	228	170	2475



SFL 90C 3000 PSI									
Наименование	РАЗМЕР НА МАРКУЧА		РЕЗБА	РАЗМЕРИ				НАЛЯГАНЕ	
	Диам.	inch	F	D	B	A	L	bar	PSI
SFL 90C 12 1/2"	12	1/2"	1/2"	30.2	43	39	72	350	5000
SFL 90C 12 5/8"	12	1/2"	5/8"	38.1	50	39	72	350	5000
SFL 90C 12 3/4"	12	1/2"	3/4"	38.1	50	39	72	350	5000
SFL 90C 16 1/2"	16	5/8"	1/2"	30.2	49	49	85	350	5000
SFL 90C 16 5/8"	16	5/8"	5/8"	38.1	55	49	85	350	5000
SFL 90C 16 3/4"	16	5/8"	3/4"	38.1	55	49	85	350	5000
SFL 90C 20 1/2"	20	3/4"	1/2"	30.2	52	57	98	350	5000
SFL 90C 20 3/4"	20	3/4"	3/4"	38.1	58	57	98	350	5000
SFL 90C 20 1"	20	3/4"	1"	44.5	62	57	98	350	5000
SFL 90C 25 3/4"	25	1"	3/4"	38.1	60	77	132	280	4000
SFL 90C 25 1"	25	1"	1"	44.5	64	77	132	280	4000
SFL 90C 25 1 1/4"	25	1"	1 1/4"	50.8	70	77	132	280	4000
SFL 90C 32 1"	32	1 1/4"	1"	44.5	82	89	150	210	3000
SFL 90C 32 1 1/4"	32	1 1/4"	1 1/4"	50.8	87	89	150	210	3000
SFL 90C 32 1 1/2"	32	1 1/4"	1 1/2"	60.3	88	89	150	210	3000
SFL 90C 40 1 1/2"	40	1 1/2"	1 1/2"	60.3	41	112	183	182	2700
SFL 90C 40 2"	40	1 1/2"	2"	60.3	102	101	172	185	2700
SFL 90C 50 2"	50	2"	2"	71.4	117	101	172	185	2475