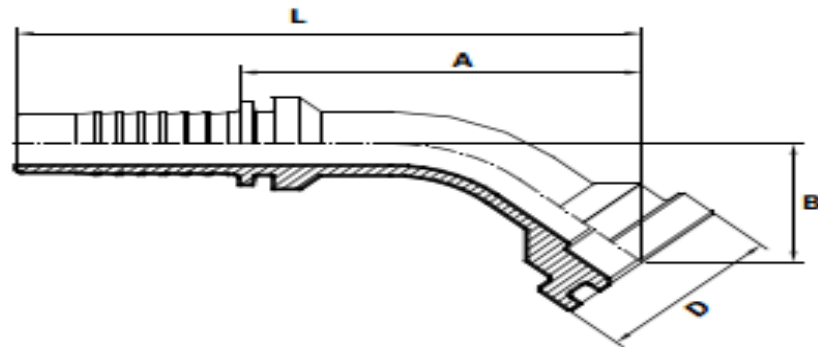
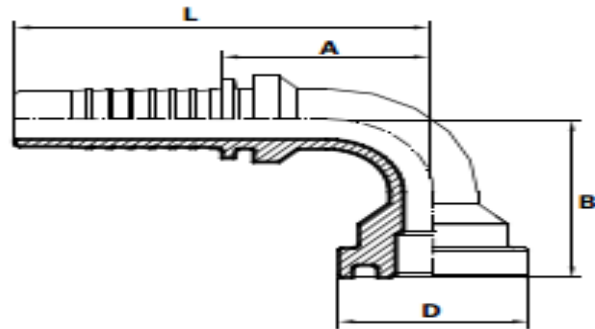


SFS 6000 PSI								
Наименование	РАЗМЕР НА МАРКУЧА		РЕЗБА	РАЗМЕРИ			НАЛЯГАНЕ	
	Диам.	inch	F	D	A	L	bar	PSI
SFS 12 1/2"	12	1/2"	1/2"	31.7	50	83	415	6000
SFS 12 3/4"	12	1/2"	3/4"	41.3	55	87	415	6000
SFS 16 1/2"	16	5/8"	1/2"	31.7	50	86	350	5000
SFS 16 3/4"	16	5/8"	3/4"	41.3	51	87	350	5000
SFS 20 1/2"	S	3/4"	1/2"	31.7	53	94	350	5000
SFS 20 3/4"	20	3/4"	3/4"	41.3	53	94	350	5000
SFS 20 1"	20	3/4"	1"	47.6	64	105	350	5000
SFS 25 3/4"	25	1"	3/4"	41.3	64	105	280	4000
SFS 25 1"	25	1"	1"	47.6	66	121	280	4000
SFS 25 1 1/4"	25	1"	1 1/4"	54.0	71	126	280	4000
SFS 32 1"	32	1 1/4"	1"	47.6	66	126	210	3000
SFS 32 1 1/4"	32	1 1/4"	1 1/4"	54	67	127	210	3000
SFS 32 1 1/2"	32	1 1/4"	1 1/2"	63.5	78	139	210	3000
SFS 40 1 1/2"	40	1 1/2"	1 1/2"	63.5	78	149	185	2700
SFS 40 2"	40	1 1/2"	2"	79.4	73	143	185	2700
SFS 50 2"	50	2"	2"	79.4	73	153	172	2480



SFS 45C 6000 PSI									
Наименование	РАЗМЕР НА МАРКУЧА		РЕЗБА	РАЗМЕРИ				НАЛЯГАНЕ	
	Диам.	inch	F	D	B	A	L	bar	PSI
SFS 45C 12 1/2"	12	1/2"	1/2"	31.7	23	64	97	415	6000
SFS 45C 12 3/4"	12	1/2"	3/4"	41.3	28	69	102	415	6000
SFS 45C 16 1/2"	16	5/8"	1/2"	31.7	26	60	96	350	5000
SFS 45C 16 3/4"	16	5/8"	3/4"	41.3	30	66	102	350	5000
SFS 45C 20 1/2"	20	3/4"	1/2"	31.7	28	64	105	350	5000
SFS 45C 20 3/4"	20	3/4"	3/4"	41.3	32	70	111	350	5000
SFS 45C 20 1"	20	3/4"	1"	47.6	35	74	115	350	5000
SFS 45C 25 3/4"	25	1"	3/4"	41.3	35	86	141	280	4000
SFS 45C 25 1"	25	1"	1"	47.6	32	89	144	280	4000
SFS 45C 25 1 1/4"	25	1"	1 1/4"	54.0	36.0	94	149	280	4000
SFS 45C 32 1"	32	1 1/4"	1"	47.6	36	100	161	210	3000
SFS 45C 32 1 1/4"	32	1 1/4"	1 1/4"	54.0	43	104	165	210	3000
SFS 45C 32 1 1/2"	32	1 1/4"	1 1/2"	63.5	44.0	107	168	210	3000
SFS 45C 40 1 1/2"	40	1 1/2"	1 1/2"	63.5	41.0	118	189	185	2700
SFS 45C 40 2"	40	1 1/2"	2"	79.4	52	119	190	185	2700
SFS 45C 50 2"	50	2"	2"	79.4	59	153	233	172	2490



SFS 90C 6000 PSI									
Наименование	РАЗМЕР НА МАРКУЧА		РЕЗБА	РАЗМЕРИ				НАЛЯГАНЕ	
	Диам.	inch	F	D	B	A	L	bar	PSI
SFS 90C 12 1/2"	12	1/2"	1/2"	31.7	44	39	72	415	6000
SFS 90C 12 3/4"	12	1/2"	3/4"	41.3	51	39	72	415	6000
SFS 90C 16 1/2"	16	5/8"	1/2"	31.7	50	49	85	350	5000
SFS 90C 16 3/4"	16	5/8"	3/4"	41.3	59	49	85	350	5000
SFS 90C 20 1/2"	20	3/4"	1/2"	31.7	53	57	98	350	5000
SFS 90C 20 3/4"	20	3/4"	3/4"	41.3	62	57	98	350	5000
SFS 90C 20 1"	20	3/4"	1"	47.6	67	57	98	350	5000
SFS 90C 25 3/4"	25	1"	3/4"	41.3	64	77	132	280	4000
SFS 90C 25 1"	25	1"	1"	47.6	69	77	132	280	4000
SFS 90C 25 1 1/4"	25	1"	1 1/4"	54	76.0	77	132	280	4000
SFS 90C 32 1"	32	1 1/4"	1"	47.6	87	89	150	210	3000
SFS 90C 32 1 1/4"	32	1 1/4"	1 1/4"	54	93	89	150	210	3000
SFS 90C 32 1 1/2"	32	1 1/4"	1 1/2"	63.5	97	89	150	210	3000
SFS 90C 40 1 1/2"	40	1 1/2"	1 1/2"	63.5	111	101	172	185	2700
SFS 90C 40 2"	40	1 1/2"	2"	79.4	126	101	172	185	2700
SFS 90C 50 2"	50	2"	2"	79.4	128	144	224	172	2480